

January 2006 News from the Harris's

www.impactministries.de



Our current address is:
Brent & Gaby Harris
Zedernweg 15
70597 Stuttgart,
Germany



We're moving in Feb.!



Our new address will be:
Brent & Gaby Harris
auf dem Kreuzberg 54a
53547 Linz-Leubsdorf
Germany

Sam the guitar man!

Sam sure loves to play his guitar whenever he gets the chance! He's especially into playing the bass guitar right now.

Joy the crawler!

Joy is just about to figure out all of the skills it takes to be a crawler! She's not quite crawling just yet, but she is definitely on the verge of figuring it out!

Brent the world traveler!

Brent's getting geared up for his trip to Florida (Jan 31-Feb 7). He will be meeting with Pastors and relatives sharing the vision in order to raise the additional support necessary to move to Bonn.

Gaby the designer!

Yes, she's making plans on how exactly she wants to decorate our new home in Bonn! First step is the kitchen. So we just found the right kitchen....whew!

Pictures of our new house!

www.impactministries.de

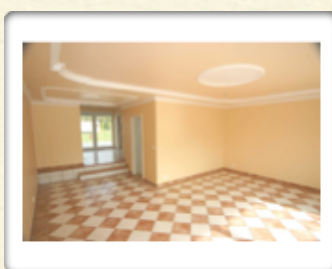
We found a beautiful home South of Bonn, in the area of Linz! It's right along the Rhine River, and is way up high on the side of a large hill.

As soon as we saw it, we knew that it was right for us. We spent most of December driving up there and looking for something that would suit us, and we finally found it!

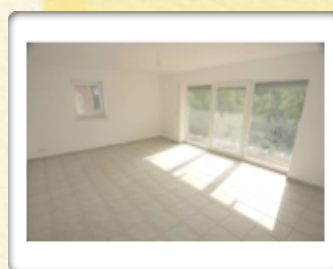
We can't wait until we can move up there around the middle or end of February and get involved with the church and bible-school at Rhema Germany as well.



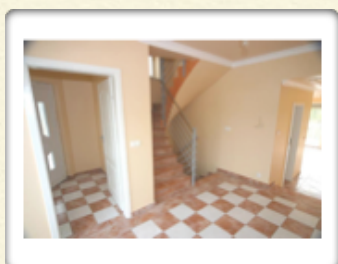
Our house is the left side



Our Living Room



Brent's Office & Guest Room



Entry & Front Hallway



Main Bathroom



View

To our Partners: (& those that are considering)

Impact Ministries, Inc. is now officially ready to receive gifts. So we now prefer that you make checks out to: "Impact Ministries, Inc." (if you desire to receive a tax-deductible receipt from us at the end of the year). Otherwise, just make it out to Brent Harris.

Either way, send the support to:
Impact Ministries, Inc. - PO Box 56 - Circle - MT - 59215

Thank you so much for your support. Without it, we could not do what we are doing. It is vital in enabling us to do what God has called us to do.